

124°21'E 124°22'E 124°23'E 124°24'E 124°25'E 124°26'E 124°27'E 124°28'E 124°29'E 124°30'E



Republic of the Philippines
PROVINCE OF BOHOL
City of Tagbilaran



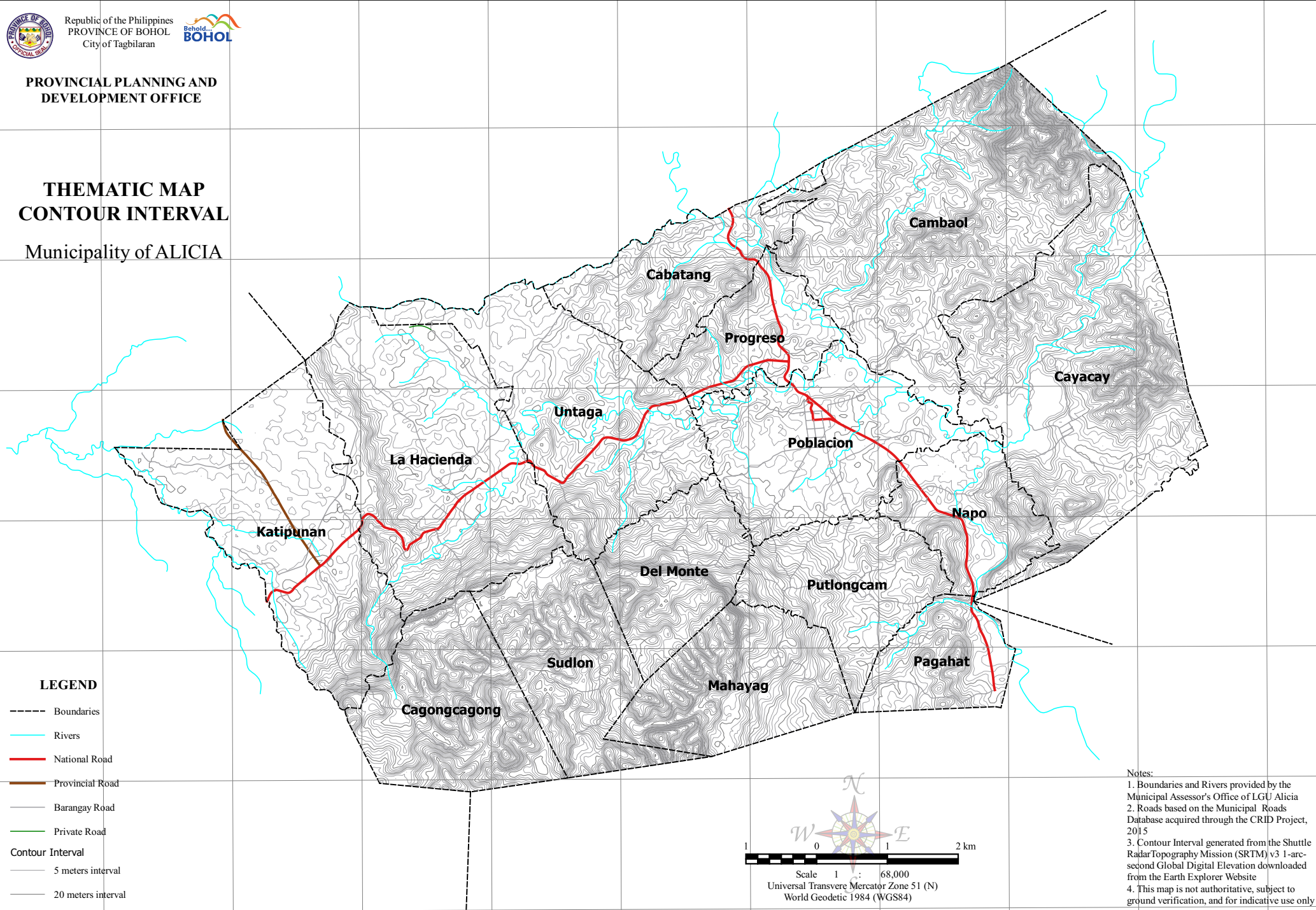
PROVINCIAL PLANNING AND
DEVELOPMENT OFFICE

THEMATIC MAP CONTOUR INTERVAL

Municipality of ALICIA

9°56'N
9°55'N
9°54'N
9°53'N
9°52'N
9°51'N
9°50'N

9°56'N
9°55'N
9°54'N
9°53'N
9°52'N
9°51'N
9°50'N



LEGEND

- Boundaries
- Rivers
- National Road
- Provincial Road
- Barangay Road
- Private Road
- Contour Interval**
- 5 meters interval
- 20 meters interval

Scale 1 : 68,000
Universal Transverse Mercator Zone 51 (N)
World Geodetic 1984 (WGS84)

Notes:

1. Boundaries and Rivers provided by the Municipal Assessor's Office of LGU Alicia
2. Roads based on the Municipal Roads Database acquired through the CRID Project, 2015
3. Contour Interval generated from the Shuttle Radar Topography Mission (SRTM) v3 1-arc-second Global Digital Elevation data downloaded from the Earth Explorer Website
4. This map is not authoritative, subject to ground verification, and for indicative use only

124°21'E 124°22'E 124°23'E 124°24'E 124°25'E 124°26'E 124°27'E 124°28'E 124°29'E 124°30'E